

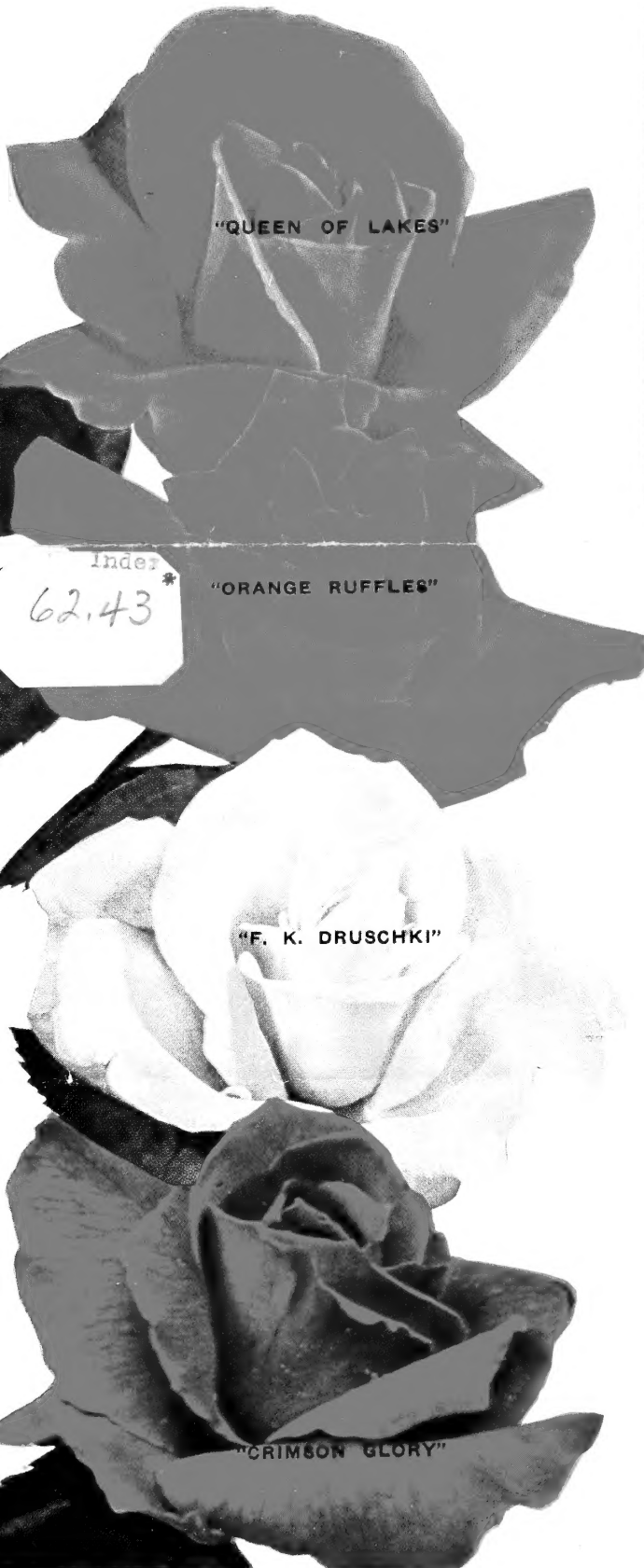
WE POT ALL OUR ROSES

WE USE A SPECIALLY PREPARED POTTING SOIL. WE RECOMMEND PLANTING POT AND ALL. THEY ARE GROWING WHEN YOU GET THEM AND CAN BE PLANTED ANY TIME WITHOUT LOSS. ALL OUR ROSES ARE GUARANTEED TO GROW AND BLOOM THE FIRST YEAR.

TODAY'S BEST BUY IN ROSES!

PICTURED BELOW ARE FOUR OF THE BEST. THEY WILL BLOOM ALL SUMMER.

2-YEAR NO. 1 PLANTS, POTTED AND GROWING ALL FOUR FOR \$6.00.



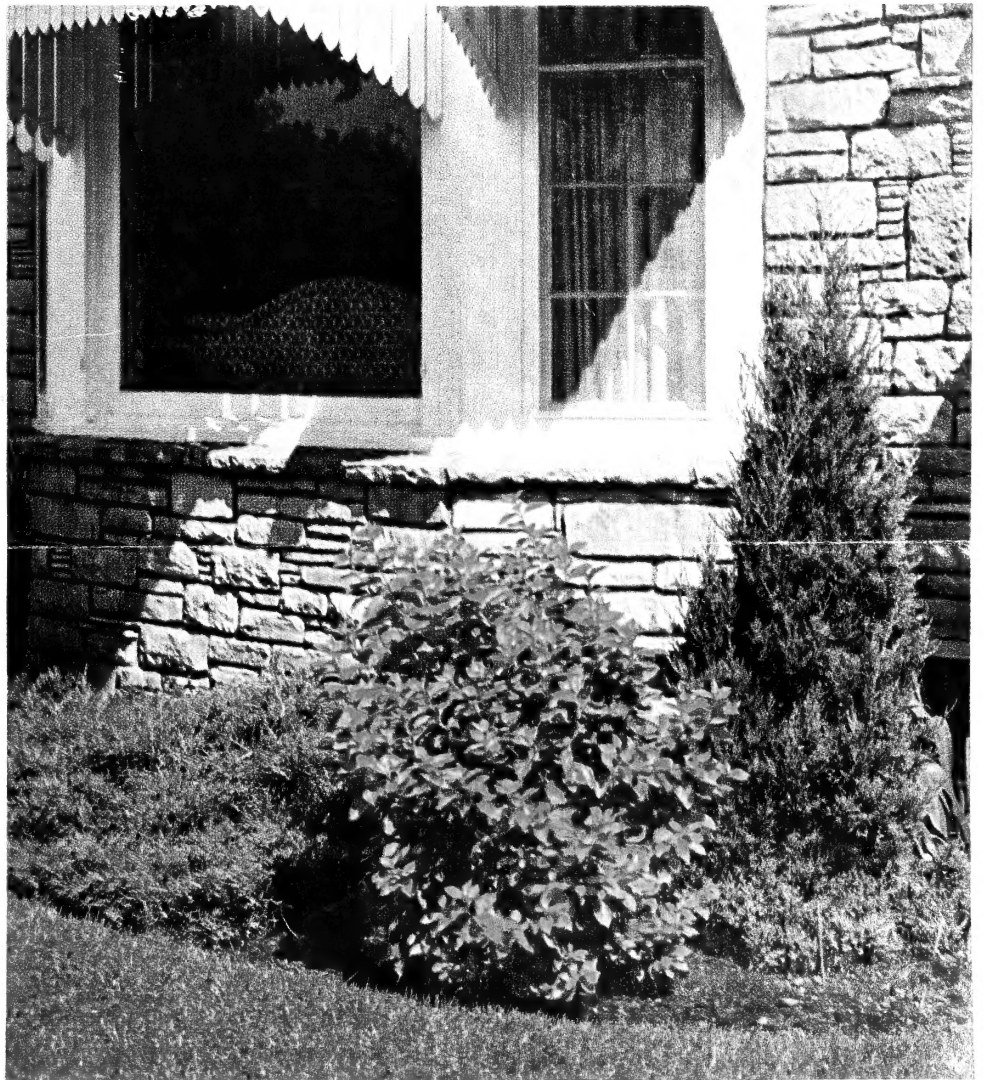
"QUEEN OF LAKES"

"ORANGE RUFFLES"

"F. K. DRUSCHKI"

"CRIMSON GLORY"

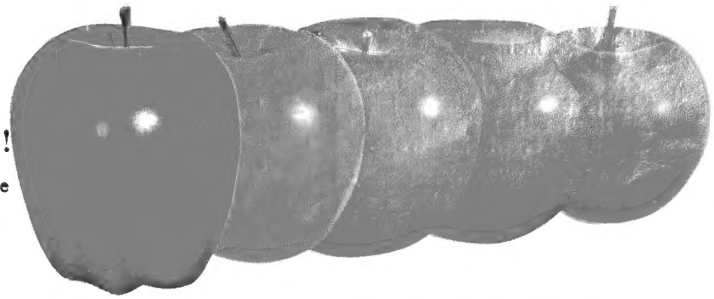
Index
62.43 *



LET US HELP PLAN YOUR FOUNDATION PLANTING. ESTIMATE FREE.

We Do Not Dig Trees on Sunday!

Previous order may be called for on Sundays.



OUR APPLE TREE SPECIAL FOR THIS YEAR

This collection is tops. One each of: Haralson, Yellow Transparent, Minjon, Wealthy and Whitney. All good straight trees 5 to 6 feet tall with extra fine roots.

ALL FIVE TREES FOR \$7.00

Spring 1956 Price List
Peters Evergreen Nursery
SHERBURN, MINN.

U. S. DEPARTMENT OF AGRICULTURE
LIBRARY
WASHINGTON 25, D. C.
OFFICIAL BUSINESS
PRINTED MATTER

U. S. DEPT. OF AGRICULTURE
LIBRARY
FEB 16 1956



PENALTY FOR PRIVATE USE TO AVOID PAYMENT OF POSTAGE, \$300 (GPO)

Library, U. S. Dept. of Agriculture.
WASHINGTON 25, D. C.

CHOICE EVERGREENS

FOR LANDSCAPE PLANTING

COLORADO BLUE SPRUCE: Choice "Shiners" from the finest block of trees we have ever grown. Will be dug balled and burlapped
 12—15 inches each \$2.50
 15—18 inches each \$3.25
 18—24 inches each \$4.00

CONCOLOR FIR: Will make a most beautiful lawn tree. Even blue color.
 3—4 ft. trees each \$7.50

BALSAM FIR: A rapid growing tree. Valuable both as a lawn tree and windbreak.
 24—30 inches each \$3.00
 18—24 inches each \$2.25

BLACK HILLS SPRUCE: Has proven its value for this area. A very compact growing tree from little up.
 15—18 inches each \$2.25
 18—24 inches each \$3.00
 24—30 inches each \$3.75
 For windbreak, in lots of 10 or more, dug bare root for \$1.00 each.

DUNDEE JUNIPER: Upright form. Dark green color. Grafted
 2—3 foot, \$5.00 3—4 foot, \$6.00
 4—5 foot \$7.50

WELCHI JUNIPER: Upright form. The inner foliage is green, the new growth is blue. Very attractive. Grafted.
 3 foot each \$5.50

MOFFETTI JUNIPER: Upright form. Very compact and blue color. A grafted scopulorum
 3—4 foot \$6.00

CANNARTI JUNIPER: Upright form. Bright green foliage. A grafted sport of virginiana.
 4—5 foot each \$7.50

PYRAMIDAL ARBORVITAE: The dark green strain. Choice matched pairs.
 18—24 inches each \$3.75

SIBERIAN ARBORVITAE: Very hardy, dwarf growing with thick heavy foliage. Can be used either as a broad upright or sheared as a globe. Choice trees.
 24—30 inches each \$5.50

MUGHO PINE: The dwarf growing pine.
 15—18 inch spread each \$3.00
 18—24 inch spread each \$4.00

SAVIN JUNIPER: Hardy anywhere. Dark green, soft almost whipcord foliage.
 18—24 inch spread each \$3.50

PFITZER JUNIPER: Low irregular growth, light green. Does well in shade.
 12—18 inch spread each \$3.50
 18—24 inch spread each \$4.25

HETZI JUNIPER: Same habit of growth as pfitzer. Foliage a light blue.
 18—24 inch each \$3.75
 24—30 inch each \$4.50

TAXUS OR YEW: A comparatively new evergreen in this area. Holds its dark green color all thru the winter. Low growing. Will thrive in complete shade.
 15—18 inch each \$4.00
 18—24 inch each \$5.50

CLIMBING VINES

BOSTON IVY: Clings firmly to brick or cement walls.
 Heavy, 2 yr. plants, 75c each

HONEYSUCKLE HECKROTTI: Everblooming, May until frost. Flame-red trumpets lined with gold.
 Heavy, 2 yr. plants, each \$1.00

CLEMATIS: Jackmani, purple; Mme. Edw. Andre, red; Henryi, white; Ramona, single blue. each \$1.50

ROSES

BROWNELL EVERBLOOMING SUB-ZERO HYBRID TEA ROSES

CURLY PINK: (Pat. 842) Beautiful curled petals borne in clusters. \$1.75 each.

LILY PONS: (Pat. 420) Large white blooms with pure yellow center. \$1.75 each.

ORANGE RUFFELS: (Pat. 1124) Large flowers frilled and ruffled. \$1.75 each.

QUEEN O' THE LAKES: (Pat. 1003) One of the finest in a red rose. \$1.75 each.

V FOR VICTORY: (Pat. 543) One of the best in a yellow rose. \$1.75 each.

PATENTED HYBRIDS

CHRYSLER IMPERIAL: (Pat. 1167) A very dark red, of good size. \$2.50 each.

BUCCANEER: (Pat. 1119) A non-fading clear yellow. \$2.50 each.

FRED HOWARD: (Pat. 1006) Rich yellow buds, tipped with light pink. \$2.00 each.

FORTY-NINER: (Pat. 792) A brilliantly hued bi-color. \$2.25 each.

HELEN TRAUBEL: (Pat. 1028) Variable color, light pink to apricot. \$2.50 each.

MOJAVE: (Pat. 1176) All American winner for 1954. Orange color. \$2.75 each.

PEACE: (Pat. 591) Color is gold and pink. Glorious blooms. \$2.50 each.

QUEEN ELIZABETH: (Pat 1259) The newest of the pink roses. \$2.75 each.

TALLYHO: (Pat. 828) A unique shade of pink. Buds red. \$2.00 each.

CRIMSON GLORY: Non-pat. An old favorite in a dark red. \$1.35 each.

F. K. DRUSCHKI: Non-pat. Very double, pure white on tall stems. \$1.35 each.

THE DOCTOR: Non-pat. Perhaps the largest of the pink hybrids. \$1.35 each.

PATENTED FLORIBUNDA

CIRCUS: (Pat. 1382) This new Floribunda is the only ALL American winner for 1955-'56 A gay multi-colored rose. \$2.50 each.

FASHION: (Pat. 789) Brilliant luminous coral flowers. \$2.00 each.

JIMINY CRICKET: (Pat. 1346) Red buds, opening to coral-orange and pink. \$2.25 each.

MA PERKINS: (Pat. 1143) Very free blooming. Another fine multicolor. \$2.00.

VOGUE: (Pat. 926) Has its own unique cherry-coral color. \$2.00 each.

RED PINOCCHIO: (Pat. 812) Rich carmine color. Wild rose fragrance. \$1.50 each.

WORLD'S FAIR: (Pat. 362) Large clusters of dark red blooms. \$1.50 each.

EUTIN: Non-pat. Large clusters of deep red flowers. Mildew resistant. \$1.35 each.

HARDY RUGOSA ROSES

AMELIA GRAVEREAUX: Bright red. Very fragrant. Blooms till frost. \$1.35 each.

GROOTENDORST SUPREME: Very hardy, red clusters of small roses all summer. \$1.35 each.

HARRISON'S YELLOW: The old standby in a yellow rose. Never fails to bloom. \$1.35 each

CLIMBING ROSES

BLAZE (See front page)

WHITE DAWN: A pure white bloom with a waxy green foliage. \$1.35 each.

FLOWERING SHRUBS

DWARF NINEBARK: A new dwarf strain. Lovely white flowers in June.
 18—24 inch 75c each; 3 for \$1.75

HONEYSUCKLE: (Zabell) Red flowers in May, followed by bright red berries. Deep green foliage.
 2—3 ft. heavy branched, 50c each.—

DOUBLE MOCK ORANGE: The new Minnesota Snowflake (Pat 538) Every blossom very double, sweet-scented.
 2—3 ft. plants each \$1.50

PHILADELPHUS AUREA: (Golden Mock Orange) Grows to a height of only 3-5 feet.
 15—18 inch plants each \$1.70

COTONEASTER ACUTIFOLIA: Thick glossy leaves, black berries. Grows anywhere.
 2—3 ft, 75c each; 3 for \$1.75

COTONEASTER INTEGERRIMA: The red berried variety. Very attractive in winter.
 12—18 inch plants each \$1.00

PINK FLOWERING ALMOND: A mass of pink blossoms early in the spring.
 18—24 inch plants each \$1.65

EUONYMUS ALATUS COMPACTA: A new dwarf shrub. Cork-like square bark. Red autumn foliage.
 15—18 inch each \$1.50

VARIEGATED DOGWOOD: A beautiful tall shrub where contrast of color is desired, bright red bark.
 2—3 ft. plants each \$1.25

FORSYTHIA OVATA: The first to bloom in the spring. Golden yellow bell-shaped flowers.
 2—3 ft. each 90c

HYDRANGEA P. G.: Blooms late, cone shaped pink blossoms.
 2—3 ft. each \$1.25

RED BERRIED ELDER: A very attractive shrub with its bright red berries all summer
 2—3 ft. plants each \$1.00

SILVERBERRY: Its silvery leaves makes a wonderful contrast among other shrubs.
 2—3 ft. well branched each \$1.00

HONEYSUCKLE, CLAVEY'S DWARF: Very compact habit of growth. Will have many uses as a dwarf shrub.
 12—18 inch each \$1.00

HI-BUSH CRANBERRY: An attractive tall shrub that puts on two shows each season. White flowers in spring, red berries in the fall.
 12—15 inch each 75c

SPIREA V. H. (Bridal Wreath) an old favorite. Grows anywhere.
 2—3 ft, 50c each; 3 for \$1.30

RED LEAF BARBERRY: A colorful shrub, red leaves all summer. Red berries hang on all winter.
 12—15 inch, 50c each 3 for \$1.30

PRUNUS CISTENA: New leaves come out a bright red. Very hardy, dwarf growing.
 18-24 inch, well-branched each \$1.50

FLOWERS

TUBEROUS ROOTED BEGONIAS — Four colors to choose from. Red, white, yellow and pink. These bulbs should be started in March or early April.

4 of any one color \$1.00
 Mixed colors \$2.50 per dozen

LYTHRUM: Mordens pink. The graceful spikes of deep pink flowers is quite a sight when planted in groups or a hedge. Blooms all summer. A hardy perennial—will grow anywhere.
 Heavy 2 year roots 4 for \$1.00

HEDGES

FOR PRIVACY
AND DIVISION OF PROPERTY

DWARF NINEBARK: This new plant makes an ideal formal hedge. Very dense, easily sheared, dwarf upright growth. Plant 18 to 20 in. apart.

12—15 inch, 25 plants for \$7.00

COTONEASTER: Thick glossy green leaves, small pink flowers, followed by an abundance of black berries makes it ideal for a screen. Can also be sheared to desired height. Plant 18-20 inches apart. 1 year heavy seedlings.

12—15 inch 100 plants for \$17.50

ZABELI HONEYSUCKLE: It's dark green foliage makes this one of the best informal hedge plants. The red flowers followed by bright red berries makes this an attractive hedge all summer, if left to grow naturally. Plant 24—30 inches apart.

18—24 inch 100 plants for \$17.50

POLISH PRIVET: A very hardy strain of privet. Makes a very attractive, neat looking hedge without shearing, or can be sheared to any height.

12—18 inch 100 plants for \$17.50

Windbreak Trees

For Protection Against Snow and Wind Be sure to make the very outside row to the north and west, Honeysuckle.

BELLA ALBIDA HONEYSUCKLE: This is the only variety that should be used for Wind break planting. Don't be fooled into planting seedlings of some southern grown stock. None will compare with this old standby. One row with plants set 4 ft. apart in the row, is all you need to stop the snow. Heavy field grown, from cuttings well rooted.

2 to 3 ft. branched 100 for \$20.00
18 to 24 inch branched 100 for \$17.50
12 to 18 inch branched 100 for \$15.00
6 to 12 inch liners 100 for \$10.00

LAUREL LEAF WILLOW: Heavy 1 year old. Well rooted.

3 to 4 ft., \$9.00 per 100

GOLDEN WILLOW: Heavy, 1 year old. Well rooted.

5 to 6 ft., \$10.00 per 100.

GREEN ASH: More ash should be planted in the windbreak. Dependable, long lived. Two year old trees.

3 to 4 ft., \$10.00 per 100

SMALL FRUITS

STRAWBERRIES — June Bearing

↘ Dunlap 100 for \$3.00
↘ Beaver 100 for \$3.00

STRAWBERRIES — Everbearing

↘ New Red Rich 100 for \$15.00

GRAPES—Concord, bears large bunches of sweet, juicy, blue-black grapes every year. Requires winter protection. 3 for \$1.25

GRAPES—Fredonia, ripens 3 weeks earlier than Concord. Requires winter protection. 3 for \$1.25

GRAPES—Moonbeam, a new white grape, Minnesota introduction, that really is a dandy. Sweet as sugar, compact bushes, hardy. 2 year No. 1 plants, 65c each.

RHUBARB—McDonald, red, very tender stalks of extra large size. Tremendous yield. No. 1 divisions, 65c each.

ASPARAGUS—Mary Washington, a very good variety for our soil. Easy to grow. 25 plants for \$1.50 100 for \$5.00

PLANT AN ORCHARD

APPLE TREES

4 to 5 ft., \$1.50 each

↘ **ORIOLE:** The earliest high quality, good size apple. Ripens in August.

↘ **BEACON:** All red, bears young and will ripen in early Sept. Extra good for pies.

↘ **MINJON:** A dark red fall apple. Truly a Minnesota Jonathan.

↘ **PRAIRIE SPY:** Late fall apple. One of the best of the recent introductions.

↘ **YELLOW TRANSPARENT:** The well known early summer apple. Always in demand.

↘ **HARALSON:** A long keeping winter apple. Large, red, solid, crisp and juicy.

↘ **FIRESIDE:** A yellow and red apple that has a distinct flavor all its own. Keeps all winter.

↘ **WHITNEY CRAB:** This well known early crab is still in big demand. Include one or more in your planting.

↘ **RED DELICIOUS:** Large red summer apple. This tree has produced good crops here for years.

↘ **GOLDEN DELICIOUS:** Grown from a tree right here at home. Like the red delicious, it has produced well for several years.

↘ **REDWELL:** A new early winter apple from University Farm.

↘ **NORTHWESTERN GREENING:** A popular old winter apple, with large smooth green fruit.

↘ **WEALTHY:** One of Minnesota's most popular late fall apples.

NEW LAKELAND: A solid red, fall apple with excellent cooking quality. Keeps well.

↘ **RED FLESH CRAB:** Fruit is red all thru. A little smaller than whitney.

↘ **CHESTNUT CRAB:** A new Minnesota introduction.

↘ **DOLGO CRAB:** Bears heavy crops of bright red, tart fruit.

PLUM TREES

1 year old from buds. \$1.50 each

↘ **SUPERIOR:** Originated by the Minnesota Fruit Breeding Farm. Very large, delicious red plum. Rich sweet flavor.

↘ **PIPESTONE:** Extra early, jumbo size. Another fine Minnesota introduction.

PEAR TREES

↘ **PARKER:** One of the sweetest, juiciest pears that grows. Ripens in early Sept.

↘ **GOLDEN SPICE:** A flavorful new canning pear that's hardy throughout Minnesota. Plant one of each for best results.

2 trees (one of each) \$3.50

NEW DWARF CHERRY TREES

↘ **NORTH STAR:** A dwarf pie cherry from U. of Minn. Big mahogany-red cherries on dwarf 5 to 7 ft. trees.

1 year old trees, 3 ft. each \$2.50

↘ **KROEKER'S CHERRY:** Another dwarf cherry that has proven its ability to produce top quality fruit over a period of years. Big red cherries on 5 to 7 ft. trees. Excellent for pies.

1 yr. old trees, 3 ft. and up each \$2.30

SHADE and ORNAMENTAL TREES

FOR BEAUTY AND COMFORT

NEW MORAINÉ LOCUST: (Pat. 836) A perfect shade tree, fast growing and long-lasting. No seed pods, no thorns. It's a beauty.

5—6 foot trees, branched each \$5.00

CRIMSON KING MAPLE: (Pat. 735) Comes out red in the spring and holds it's color all summer. A brilliant new tree.

6—7 foot whips \$4.75 each
6—7 foot field grown, 2 year \$6.50 each

SCHWEDLERI MAPLE: One of the best. Color changes from red in spring, green in summer to yellow in fall.

6—7 foot field grown, 2 year \$5.00 each

NORWAY MAPLE: Rapid grower, with large green leaves all summer. A very desirable tree.

7—8 foot, field grown, 2 year \$4.50 each

HARD OR SUGAR MAPLE: One of our finest shade trees. A native Minnesota tree, green leaves that turn to yellow and scarlet in fall.

6—8 foot trees branched \$4.50 each

WHITE CLUMP BIRCH: For that "natural look", plant three trees in the same hole.

2-3 ft., trees potted 3 for \$2.00

CUT LEAF WEEPING BIRCH: White bark, graceful drooping branches and finely cut leaves.

7—8 ft., well branched. \$5.75 each

LAKE CITY ELM: A grafted form of American elm, selected for their uniformity, good shape and fast growth.

6—8 ft., well branched \$3.00 each

AMERICAN ELM: Hardy fast growing, dependable.

10—15 ft. trees \$5.00 each
8—10 ft. trees \$3.50 each
6—8 ft. trees \$2.50 each

GREEN ASH: Dependable, long lived, good shade trees. Hardy everywhere.

6—8 ft. trees, transplanted \$1.75 each

LOMBARDY POPLAR: Widely used for tall screens and accent plants. Glossy leaves that shimmer in the breeze.

6—8 ft., lightly branched 75c each
5—6 ft., straight whips 50c each
4—5 ft. whips 10 for \$3.50

BOLLEANA POPLAR: Green bark, light silvery leaves.

10—12 ft., heavy branched \$3.50 each

↘ **ALMEY CRAB:** A new introduction in flowering crabs, that has been sensational all over the country. Large blooms of rich red color. You will like Almey.

Well grown 2 yr. old trees each \$2.75

STRATHMORE CRAB: Probably the best pyramidal type crab offered. Will grow to a height of 15 feet. Pink blossoms.

3—4 ft. trees \$2.85 each

BECHTEL'S CRAB: (Malus ioensis plena) Beautiful large double flowers. No fruit.

3—4 ft. trees \$2.50 each

WILLOW, Niobe Weeping: Needs lots of room to develop. Golden yellow bark, narrow green leaves.

Well branched, 1 yr. old each \$1.00

WILLOW, Pussy: A new French Hybrid. Popular on account of the extra large catkins, in April before the leaves come out.

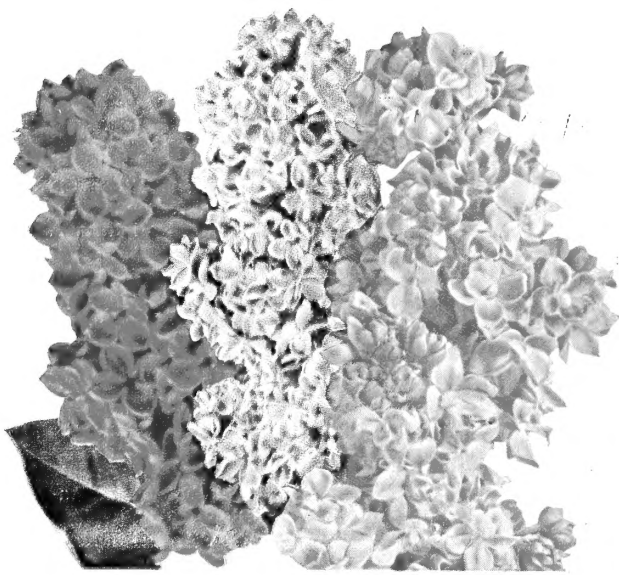
Well branched, potted each \$1.25

FERTILIZER

VEG-E-GRO: A completely balanced plant food for all vegetables. (8% Nitrogen-16% available Phos. Acid-16% Water soluble potash. 25 lb. bag \$1.45

GRAS-GROER: A completely balanced plant food for lawns, shrubbery, flowers and trees. (8% Nitrogen-8% Available Phos. Acid. 6% water soluble Potash) 50 lb. bags, \$2.50

SHEEP MANURE 25 lb. bag \$1.50



FRENCH LILACS

(Available in red, white and purple only)

Three of the finest French Lilacs, are Chas. Joly, a double red, Ellen Willmott, a beautiful double white, and Ludwig Spaeth, a single dark purple.

ALL THREE IN 12-18" PLANTS FOR \$3.00



RASPBERRIES

- Indian Summer—The best of the ever-bearing raspberries. \$2.65 per dozen 25 for \$5.00
- Latham—A perfectly hardy, strong, vigorous grower. Big red fruit. \$2.40 per dozen 25 for \$4.75



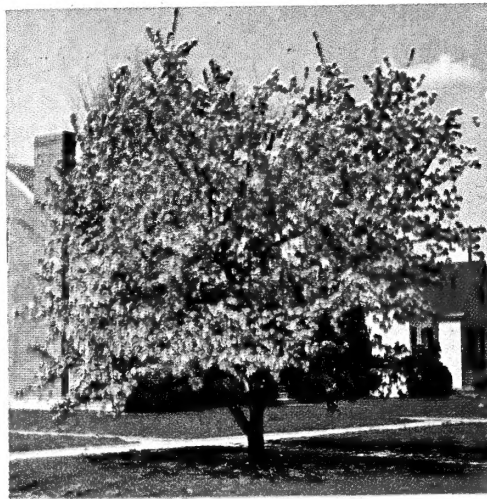
BLACK HILLS SPRUCE

One of the finest evergreen for either windbreak or as specimen trees. Our special bargain again this year. 12-15" good bushy trees for \$1.00 ea. in lots of 10 or more.

SAVE MONEY!

By getting your planting material which has been grown right here near your home. We have no salesmen—buy direct and save the difference. Join the "Do-It-Yourself" Club. Anyone can do the planting.

Visit our Nursery—see for yourself the high quality of our trees and plants. You will be glad you did.



HOPA FLOWERING CRAB

When in full bloom at apple blossom time, Hopa is a solid mass of bright pink flowers, a great lovely ball of pink bloom. Clusters of small bright red fruit in Autumn. Very hardy. Grows to 20 feet unless pruned.

WELL BRANCHED 5-6 ft. TREES — 3 FOR \$5.00



RED LEAF BARBERRY

Rich lustrous bronze-red foliage. Bright red berries hang on all winter.

Well branched 15-18" plants 3 for \$2.00



Jiminy Cricket (Pat. 1346)

TURN TO INSIDE PAGE FOR COMPLETE LIST OF ROSE VARIETIES WE HAVE TO OFFER.

All America winner for 1955. A truly great floribunda rose.

\$2.25 Each.



HYDRANGEA A. G. "Hills of Snow"

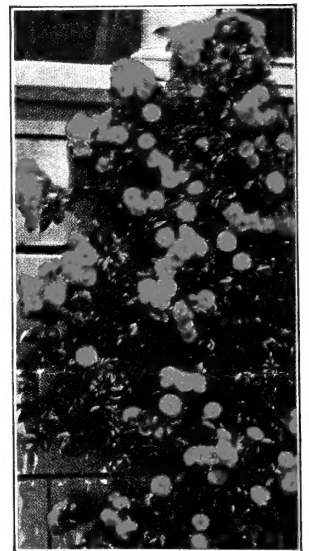
Widely used in shady places. Well-branched 18-24 inch plants \$1.25 Each.



PIPESTONE PLUMS

Special Collection of the finest in plum trees. Three Superior, two Pipestone and 1 Kaga (pollinizer).

All six 5-6 ft. trees for \$8.00.



CLIMBING ROSE — BLAZE

Makes a brilliant, flaming pillar of thousands of glowing red blooms! Continuously grows huge clusters of 2 to 3 inch flowers that hold their color well. The most colorful, most dependable climber.

2 Yr. No. 1 Plants — \$1.35 each.